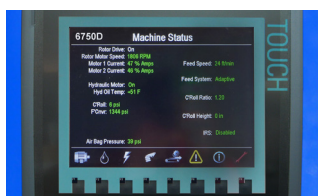


6750D Electric Horizontal Grinder

The 6750D handles your biggest grinding jobs at stationary or semi-stationary operations.



The Siemens PLC Control System

Easily monitor system performance. The fully integrated, industrial grade Siemens PLC interface is user-friendly and customizable to your application.



The Impact Release System Protects Your Investment

Peterson's patented Impact Release System's air bags provides uniform grinding and protection from contaminated feedstock, a feature unique to Peterson grinders.



Maximum Power with High Torque Electric Motors

The 6750's industrial grade electric motors have a rugged cast-iron frame and feature dynamically balanced die-cast aluminum rotors for durability and long wear.



Use Peterson Bits and Grates for the Best Quality Product

Peterson offers a wide variety of durable, long-lasting bits and grates to enable you to produce exactly the products your customers demand.

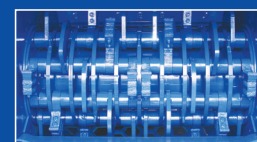
The Peterson 6750D Horizontal Grinder is the electric powered version of the popular trailer mounted 6700D.

Highly productive and efficient, the 6750D is powered by twin 600 HP (450 kW) electric motors with either VFD or soft starter control packages, the 6750D is ideal for stationary or semi-stationary operations. Electric power costs are typically much lower than diesel fuel costs, and in today's changing economy, electric power may be the answer to increasing your profits.

With an internal drive compression roll and a 66 x 50 inch (168 x 127 cm) feed opening, the 6750D can handle the requirements of your daily grind.

The 6750D features Peterson's Adaptive Control System, which controls all components of the feed system to optimize output. This system senses variations in motor load and adapts the operating parameters to produce the maximum amount of material at all times.

Peterson's three-stage grinding process with an up turning rotor and large grate area enables the 6750D to produce materials to exact specifications. The quick-change multiple grate system makes it easy to customize grate configurations to produce a wide variety of finished materials.



The 6750D features a drum (left) or pinned (right) rotor.

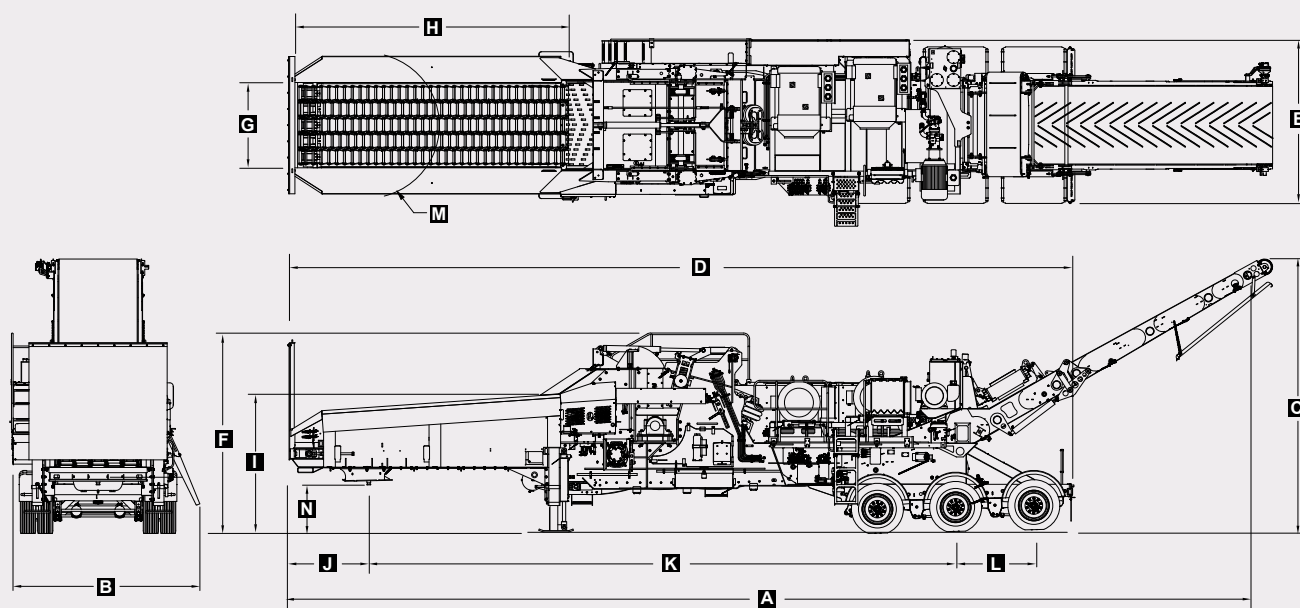
Grates are removed through an access door on the side wall.

Since 1981, Peterson has specialized in the developing of delivery and processing equipment that turns low-grade organic materials into high value products.



Peterson
an Astec Industries Co.

6750D Dimensions



6750D Specifications

Dimensions

A Operating Length	62'10" (19.15 m)
B Operating Width	12' (361 cm)
C Operating Height	17'6" (534 cm)
D Travel Length	51' (1562 cm)
E Travel Width	10'7" (323 cm)
F Travel Height	12'11" (395 cm)
G Feed Conveyor Width	66" (152 cm)
H Hopper Length	17'6" (560 cm)
I Hopper Height	8'9" (267 cm)
J Front to 5th Wheel	5'2" (155 cm)
K 5th Wheel to Center Axle	37'6" (1143 cm)
L Axle Spacing	60" (152 cm)
M 5th Wheel Clearance Radius	12' (366 cm)
N 5th Wheel Height	39" (99 cm)

Weights

Machine Weight*	103,000 lbs (46 720 kg)
Tri-Axle Weight*	60,000 lbs (27 215 kg)

*depending on configuration

Powertrain

Electric Power	USA: 460 volt, 60Hz, 3-phase electric Europe: 400 volt, 50Hz, 3-phase electric Canada: 575 volt, 60Hz, 3-phase electric
Rotor Drive Motors	crusher duty, 2 x 600 hp (450 kW)
Auxiliary Motor (for hydraulic functions)	High efficiency 100 hp (75 kW)
(Does not include soft start and switching gear)	
Main Hydraulic Tank Capacity	95 gal (360 L)

Feed System

Hopper Capacity	11yd ³ (10 m ³)
Hopper Width	66" (168 cm)
Hopper Length	17'6" (550 cm)

Feed System (cont.)

Feed Chain	5 sections, full hopper width
Hopper Height	8'9" (267 cm)
Feed Opening (width x height)	66" x 50" (168 cm x 127 cm)
Land Clearing Mode	66" x 65" (168 x 165 cm)
Compression Roll Diameter (tip to tip)	42" (107 cm)

Rotor

Rotor Shaft Size	7" (19 cm)
Rotor Speed	840 rpm @ 2100 rpm (engine)
Rotor Width	69" (176 cm)
Rotor Diameter	46" (118 cm)
Bit Size (width x height)	3" x 6" (76.2 x 16.5 mm)
Number of Bits	Drum Rotor 22, Pinned Rotor 20, R+ Pinned Rotor 18

Grate Data

Number of Grate Sections	4
Total Grate Area	5253 in ² (33 890 mm ²)
Grate Coverage	186 degrees
Grate Thickness	1" (38.1 mm)

Discharge System

Discharge Conveyor Width	60" (152 cm)
Conveyor Speed	450–700 ft/min (137.20–213.36 m/min)

Optional Equipment

Discharge Conveyor-long, Magnetic Head Pulley on Discharge Conveyor, Magnetic Cross Belt Conveyor (rare earth or ceramic), Scrap Metal Collection Box (with Cross Belt Conveyor) Air Compressor, Grate Hangers, Feed Chain Return Pan

Production

Greenwaste	583 yd ³ /170 US tons (446 m ³ /154 metric tons) per hour
Scrap Board	653 yd ³ /111 US tons (499 m ³ /101 metric tons) per hour
(Actual output may vary due to moisture content, material density, material size, support equipment, and grate size. Production rates are based on grinding 50 minutes per hour.)	

Specifications subject to change without notice.

PETERSON an Astec Industries Company

PO Box 40490 • Eugene, OR 97404 • Tel 800.269.6520 Fax 541.689.0804 • www.petersoncorp.com

