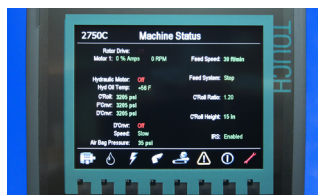


2750C Electric Horizontal Grinder

A flexible and energy saving solution for stationary or semi-stationary operations.



The Siemens PLC Control System

Easily monitor system performance. The fully integrated, industrial grade Siemens PLC interface is user-friendly and customizable to your application.



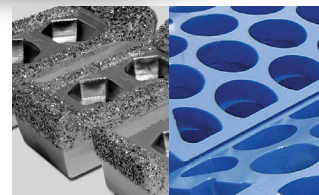
The Impact Release System Protects Your Investment

Peterson's patented Impact Release System's air bags provides uniform grinding and protection from contaminated feedstock, a feature unique to Peterson grinders.



Maximum Power With A High Torque Electric Motors

The 2750B's industrial grade electric motors have a rugged cast-iron frame and a dynamically balanced die-cast aluminum rotor for durability and long wear.



Use Peterson Bits and Grates for The Best Quality Product

Peterson offers a wide variety of durable, long-lasting bits and grates to enable you to produce exactly the products your customers demand.

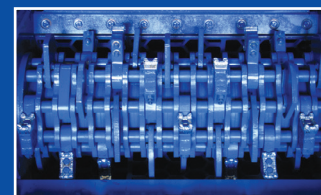
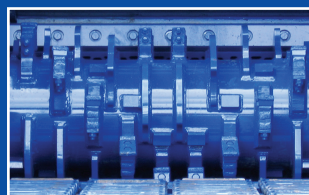
The 2750C electric horizontal grinder is ideal for operations that can take advantage of stationary or semi-stationary operations.

Powered by a single 400, 500, or dual 300 horsepower (300, 375, or 450 kW) electric motors, the Peterson 2750C has plenty of power. Since electric power costs are typically much lower than diesel fuel costs, electric power may just be the answer for increasing your profits.

With a feed opening of 60¾ x 32 inches (154 x 81 cm) combined with Peterson's high lift feed roll for an optional opening up to 44 inches (112 cm) high, the 2750C can reduce a diverse range of raw materials.

Our quick-change multiple grate system makes it easy to customize grate configurations to produce a wide variety of finished materials.

Uncertain about your power source requirements? Our experienced engineers can evaluate your operations. Peterson offers a choice of soft-start or Variable Frequency Drives (VFDs) for the best integration with your electrical power source.



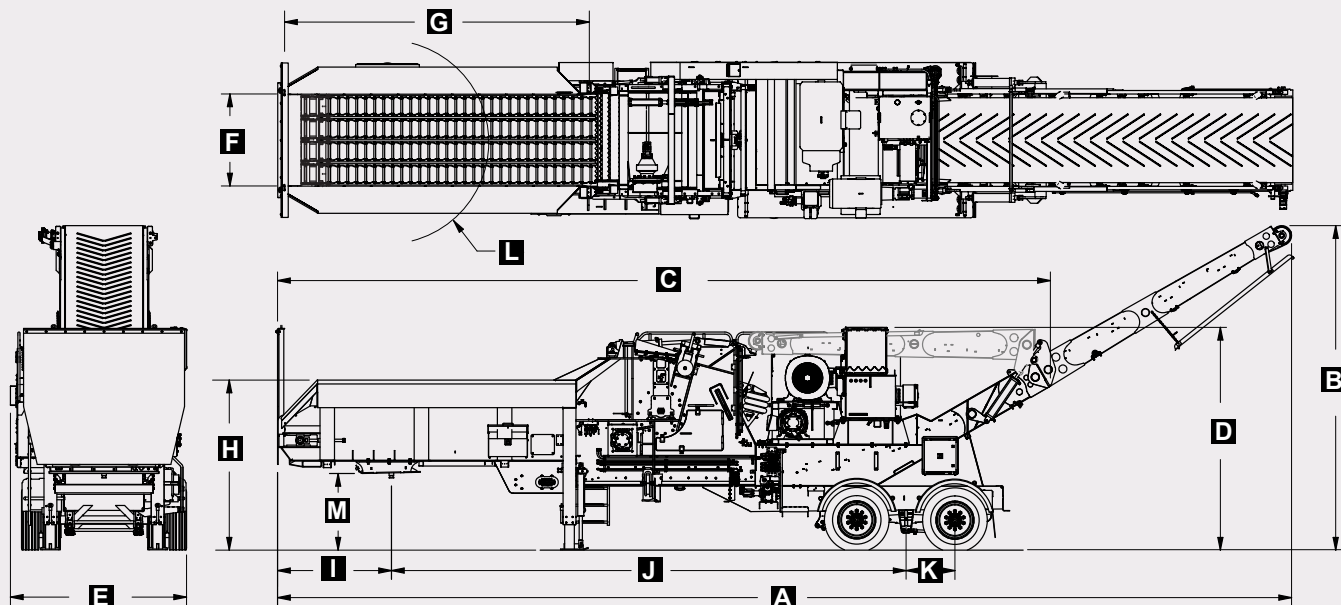
The 2750C features a drum (left photo) or pinned (right photo) rotor.

Since 1981, Peterson has specialized in the developing of delivery and processing equipment that turns low-grade organic materials into high value products.



Peterson
an Astec Industries Co.

2750C Dimensions



2750C Specifications

Scan with your smartphone
to see a video of the 2750C



Dimensions

A Operating Length	52'-6" (16 m)
B Operating Height	16'-9" (511 cm)
C Travel Length	39'-11" (1217 cm)
D Travel Height	11'-6" (191 cm)
E Operating/Travel Width	9'-1" (277 cm)
F Feed Conveyor Width	4'-10" (147 cm)
G Hopper Length	15'-7" (475 cm)
H Hopper Height	6'-3" (272 cm)
I Front to 5th Wheel	5'-11" (180 cm)
J 5th Wheel to Center Axle	26'-7" (810 cm)
K Axle Spacing	2'-6" (76 cm)
L 5th Wheel Clearance Radius	6' (183 cm) radius
M Operating 5th Wheel Height	3'-8" (124 cm)

Weights

Machine Weight*	Approx. 54,000 lbs (24 500 kg)
Tandem Weight*	Approx. 33,000 lbs (14 970 kg)

*depending on configuration

Powertrain

Electric Power	USA-460 volt, 60Hz, 3-phase electric Europe-400 volt, 50Hz, 3-phase electric Canada-575 volt, 60Hz, 3-phase electric
Rotor Drive Motors	crusher duty, 400 hp (300 kW) crusher duty, 500 hp (375 kW) crusher duty, 600 hp (450 kW)
Auxiliary Motor (for hydraulic functions)	High efficiency 100 hp (75 kW)
Hydraulic Tank Capacity	100 US gal (379 L)

Feed System

Hopper Capacity	8.5 yd ³ (6.5 m ³)
Feed Chain	4 sections, full hopper width
Feed Opening (width x height)	60¾" x 32" (153 x 81 cm)

Land Clearing Mode	60¾ x 44" (153 x 112 cm)
Compression Roll Diameter (tip to tip)	28" (71 cm)

Rotor

Rotor Shaft Size	47/16" (113 mm) @ bearing, 5¾" (146 mm) @ center
Rotor Speed	10,362 fpm (3158 rpm) @ 2100 rpm (engine)
Rotor Width	59¾" (152 cm)
Rotor Diameter	32" (81 cm)
Bit Size (width x height)	2¾ x 5" (70 x 127 mm)
Number of Bits	20 Drum Rotor, 18 Pinned Rotor, 30 ASG Rotor

Grates

Number of Grate Sections	4
Total Grate Area	3024 in ² (19 509 cm ²)
Grate Coverage	180 degrees
Grate Thickness	1" (25 mm)

Discharge System

Discharge Conveyor Width	48" (122 cm)
Conveyor Speed	500, 600, or 700 fpm (152, 183, or 213 rpm)

Optional Equipment

Feed Chain Return Pan, Magnetic Cross Belt Conveyor, Scrap Metal Collection Box (requires cross belt magnet), Feed Tailgate, Feed Tail Boot, Hopper Height Extension

Production (with one 600 hp motor)

Greenwaste	264 yd ³ /77 US tons (201 m ³ /70 metric tons) per hour
Scrap Board	323 yd ³ /55 US tons (247 m ³ /50 metric tons) per hour
(Actual output may vary due to moisture content, material density, material size, support equipment, and grate size. Production rates are based on grinding 50 minutes per hour.)	

Specifications subject to change without notice.

PETERSON an Astec Industries Company

PO Box 40490 • Eugene, OR 97404 • Tel 800.269.6520 Fax 541.689.0804 • www.petersoncorp.com

